

Tusk Severe Impact UHMW Dirt Bike Skid Plate

Part Number: 2119120006

KTM XC-W

Thank you for purchasing the Tusk Severe Impact UHMW Dirt Bike Skid Plate. Please take note of the information and instructions below to get the most out of your Tusk product.



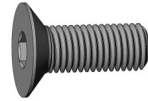
INSTALLATION AND PRODUCT INFORMATION

Attention: Before you throw any packaging away, make sure you received all the necessary hardware.

Hardware:

- 1- Skid Plate
- 2- Mount Brackets (Top and Bottom)
- 1- Rear Mount Bracket
- 8- M6 x 1.0 x 20MM Countersunk Allen Bolt
- 4- Cup Washer
- 4- M6 x 1.0 x 20MM Flange bolt (8mm head)
- 1- Thread locker

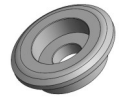
****Images may vary from final product****



8- M6 x 1.0 x 20mm
Countersunk Allen bolt



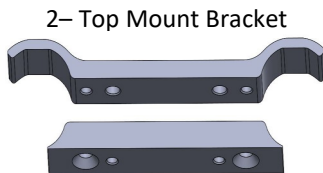
4- M6 x 1.0 x 20mm
Flange Bolt (8mm Head)



4- Cup Washer

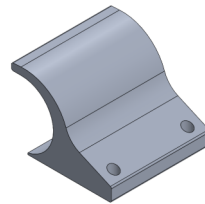


1- Thread Locker

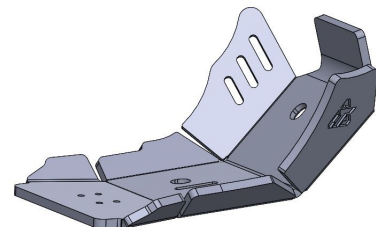


2- Top Mount Bracket

2- Bottom Mount Bracket



1- Rear Mount Bracket



1- Skid Plate

1. Remove the 2-OEM powder coated bolts in the frame (located just below the exhaust port). **Fig. 1**
2. Using the 4-M6 x 1.0 x 20mm Countersunk Allen Bolts & Thread Locker, tightly install the Rear Mount Bracket onto the Skid Plate with the open end facing the linkage guard. **Fig. 2**
3. Insert the 2- Mount Brackets (Top and Bottom) into the frame of the bike using the 8- M6 x 1.0 x 20mm Countersunk Allen Bolt, leaving the clamps loose enough for proper alignment. Place one forward of the front motor mount (approximately 1"), and one behind (approximately 1.25"). **Fig. 3, 4**

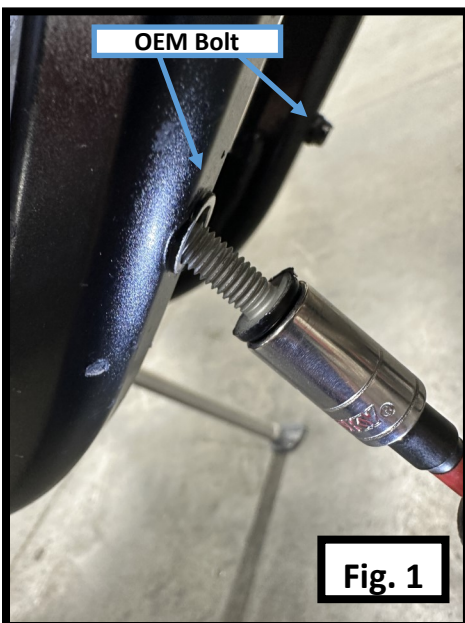


Fig. 1



Fig. 2

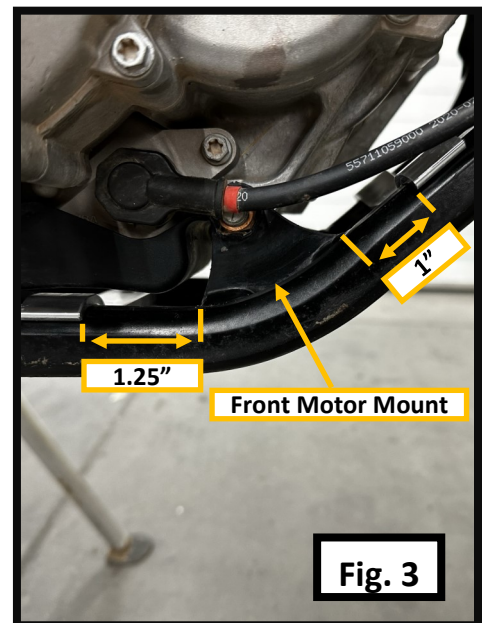
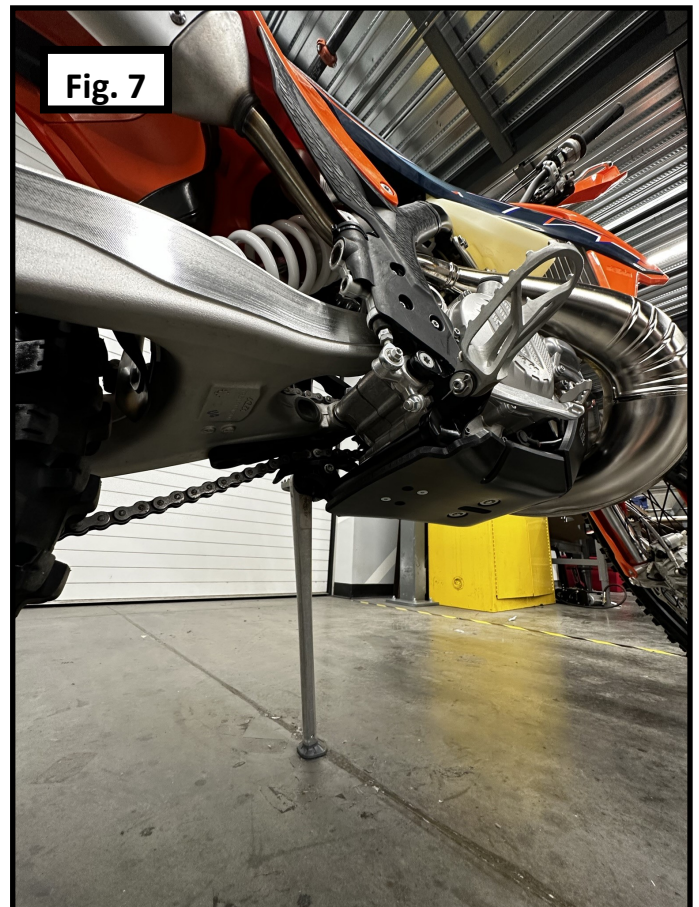
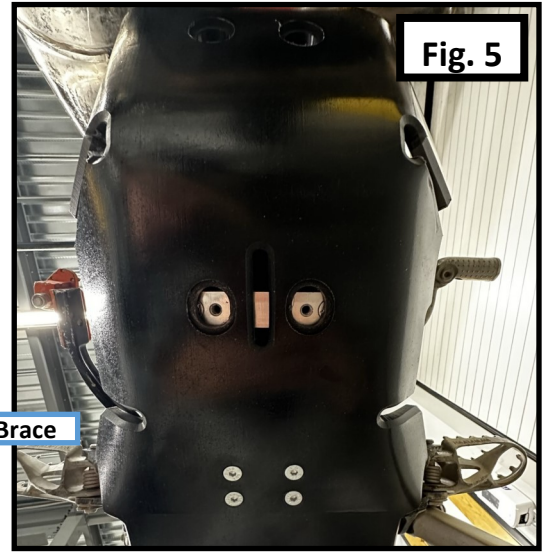
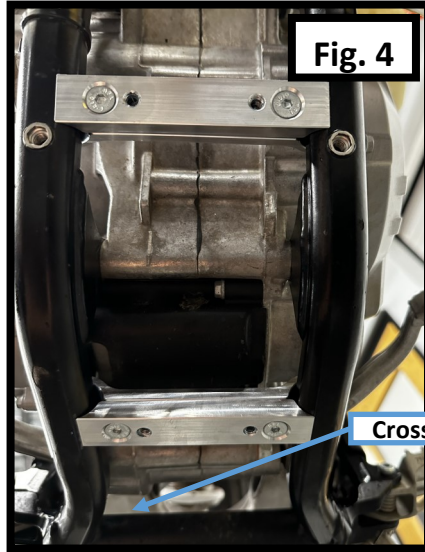


Fig. 3

4. Put the **Skid Plate** onto the bike by sliding the front tab just below the exhaust port and the frame. Then push the **Rear Mount Bracket** onto the cross brace between the foot pegs. Ensure the **Rear Mount Bracket** is fully seated onto the cross brace.
5. Check both the **Skid Plate** and the **Mounting Bracket** holes for proper alignment. Make adjustments as needed to the positioning of the **Mounting Brackets** until all four holes are aligned. **Fig. 5**
6. Once the brackets are properly aligned, remove the **Skid Plate**. Apply thread locker and fully tighten the **Mounting Brackets**.
7. Using **Thread Locker**, tighten the **Skid Plate** to the frame of the bike using the 4- **M6 x 1.0 x 20mm Flange bolts (8mm head)** with the 4- **Cup Washer**. **Fig 6,7**



Enjoy the use of your new Tusk Severe Impact Skid Plate!